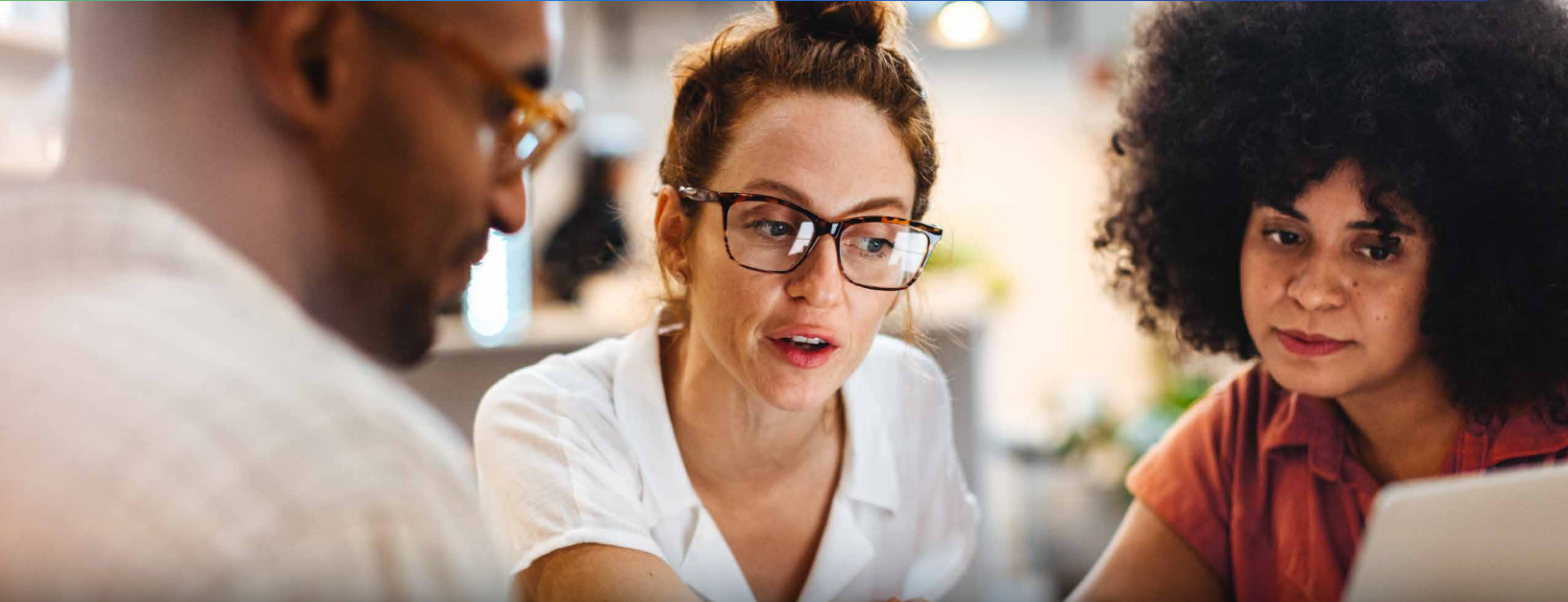


Navigating DORA Compliance with NetBrain Automation

Digital Resiliency in the European Union Financial and ICT Sectors



Disruption is a driving force that can undermine financial institutions' credibility and trust. The European Union's Digital Operational Resilience Act (DORA) aims to regulate operational resilience across not just financial services institutions in the European Union (EU).

As the deadline for compliance approaches, organizations operating within the EU financial sector or engaging with EU financial entities must swiftly adopt a robust risk management framework for their Information and Communication Technology (ICT) systems. Therefore, it's critical to shore up any gaps in your network operations with a holistic approach that meets compliance regulations as well as the demands for operational excellence.

This paper explores the key pillars of DORA and how NetBrain Next-Gen provides a powerful no-code automation platform for seamless observability and compliance.

Understanding DORA

At its core, DORA revolves around five pillars, each essential for ensuring the resilience and security of ICT infrastructure:

1. **ICT Risk Management:** Identifying, mapping, and continuously assessing critical ICT systems and assets.
2. **Incident Reporting:** Promptly monitoring, logging, and classifying all ICT-related incidents.
3. **Digital Operational Resilience Testing:** Regularly testing ICT systems for security and resilience.
4. **Third-party Risk Management:** Ensuring compliance extends to third-party ICT providers.
5. **Information Sharing:** Sharing insights and lessons learned to prevent future incidents.

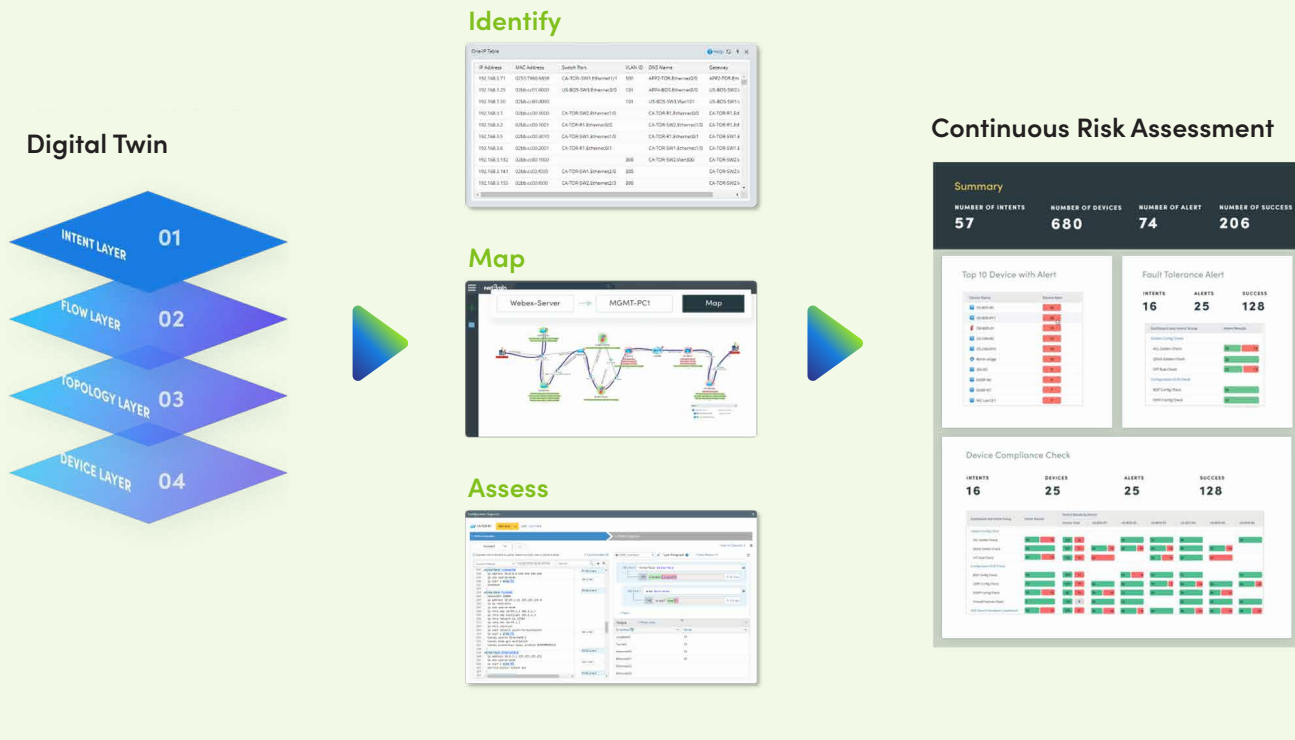
NetBrain's Role in DORA Compliance

NetBrain's Next-Gen platform is purpose-built to navigate the complexities of DORA compliance, offering a no-code automation solution tailored to your organization's needs.

Manual operations processes are no longer compatible with the efficiency and resiliency required by DORA. What's now required is an efficient, collaborative approach among all your Ops teams including network, cyber, security, resilience, risk management, and third-party. NetBrain Next-Gen's no-code network automation and observability platform provides customizable visibility and reporting via summary dashboards as well as proactive assessment for incident prevention.

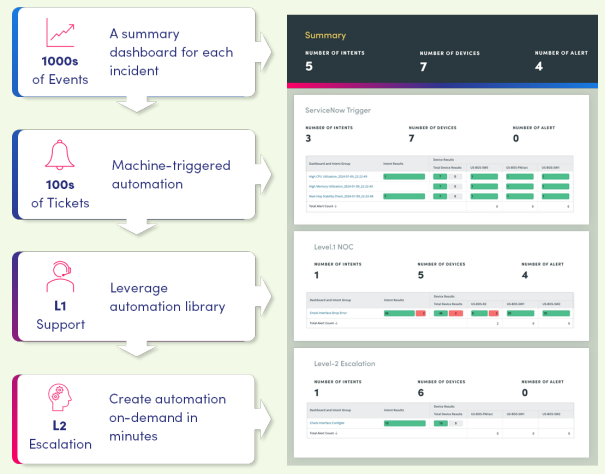
ICT Risk Management

NetBrain facilitates real-time, ongoing network assessments without the need for coding or scripting. By auto-discovering the entire network and assessing capacity, security, resilience, and performance requirements continuously, organizations can stay ahead of potential risks.



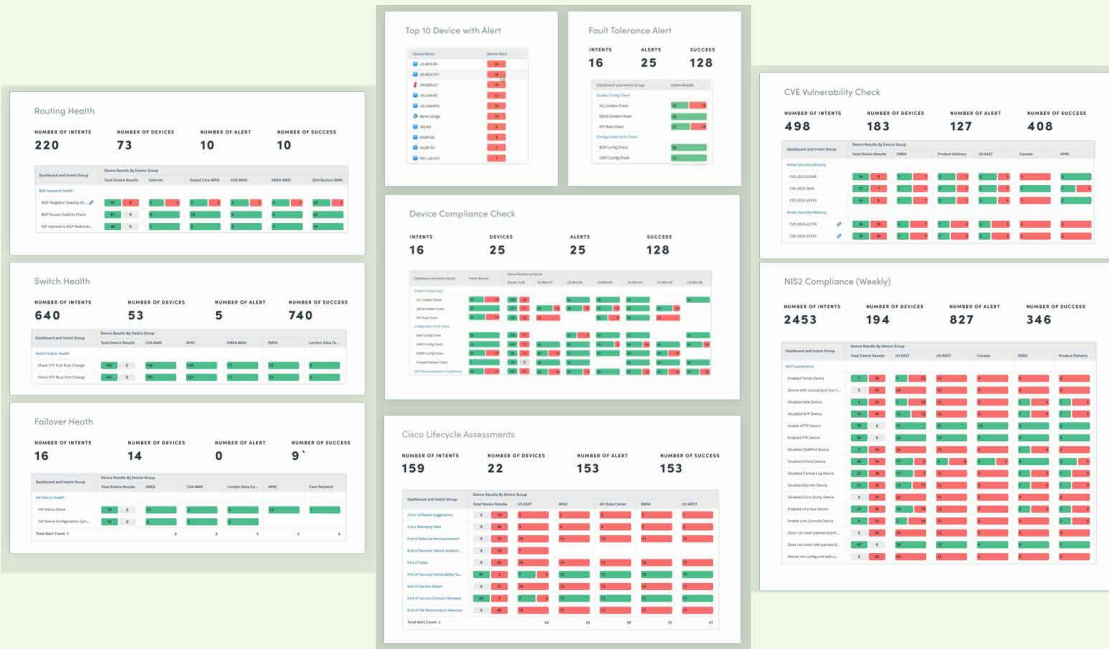
Incident Reporting

Seamless integration with ITSM and incident tools enables NetBrain to streamline incident response workflows with machine-triggered automation. Detailed root cause analysis and incident-specific dashboards ensure efficient sharing of information internally and externally.



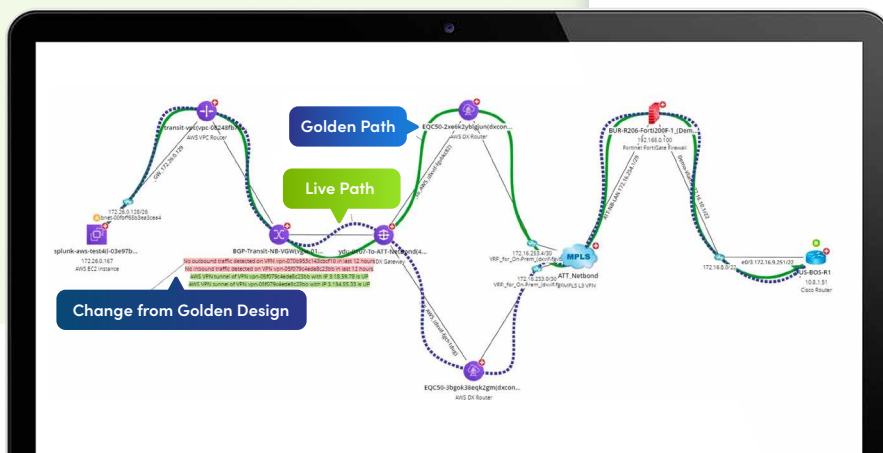
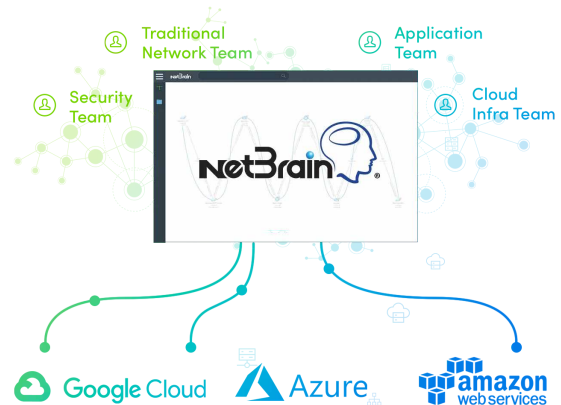
Digital Operational Resilience Testing

NetBrain's continuous assessment dashboards provide up to date visual confirmation of the resilience architecture's status, supporting high availability and fault tolerance designs across hybrid network infrastructures.



Third-party Risk Management

With full stack observability into every network device, topology, and traffic flow—regardless of vendor or topology—NetBrain detects and mitigates errant conditions, minimizing the risk to production service delivery, even over third-party infrastructure like cloud, colocation facilities, or ISP circuits.



Information Sharing

NetBrain's extensible automation library and incident dashboards empower ICT teams to proactively address network threats and vulnerabilities while memorializing troubleshooting steps and lessons learned for future reference. Dynamic maps with network intent diagnosis visibility, summary dashboards, and a self-service chatbot advance collaboration and an autonomous, well-informed support team.

Automation Library

- Problem**
 - Data unavailable
 - Voice Choppy
 - Response Times Reduced
- Key Applications and Paths**
 - Voice, Internet, VPN path
 - DCI Paths
 - Other key application paths
- Network**
 - Access errors
 - Configuration errors
 - BGP or OSPF errors
- Device**
 - Host or Service Unreachable
 - Printer/Database
 - Device unavailable
 - Permission restrictions

Intents

Boolean Conditions Through Visual Parser

- Library
- OSPF Errors
- CU Command Diagnosis
- Voice Chappy Diagnosis
- Access Errors
- Device unavailable

ServiceNow Trigger

NUMBER OF INTENTS	NUMBER OF DEVICES	NUMBER OF ALERT
3	7	0

Level1 NOC

NUMBER OF INTENTS	NUMBER OF DEVICES	NUMBER OF ALERT
1	5	4

Level-2 Escalation

NUMBER OF INTENTS	NUMBER OF DEVICES	NUMBER OF ALERT
1	6	0

Dashboards

Chat Bot

NetOps

03/10 9:45 AM

03/10 9:41 AM

03/10 10:45 AM

Cloud BGP Diagnosis

What would you like to check?

- Check Interface
- Check BGP
- Check BGP

Check Path

Azure to On-Pre

Select a Path to Diagnose

03/10 9:41 AM

NetBrain: Your DORA Compliance Partner

It's time to make a strategic investment in your financial organization's reputation and future. With its comprehensive outage prevention capabilities, NetBrain empowers organizations to meet DORA standards efficiently. The no-code automation and observability platform ensures compliance with current regulatory standards as well as the ability to adapt to new requirements and operational goals. NetBrain is the secret sauce for helping businesses achieve DORA compliance with an efficient, accurate, and forward-looking approach.

About NetBrain Technologies

Founded in 2004, NetBrain is the market leader for NetOps automation, providing network operators and engineers with dynamic visibility across their hybrid networks and low-code/no-code automation for key tasks across IT workflows. Today, more than 2,500 of the world's largest enterprises and managed service providers use NetBrain to automate network problem diagnosis, generate real-time documentation, accelerate troubleshooting, and enforce enterprise architectural rules.