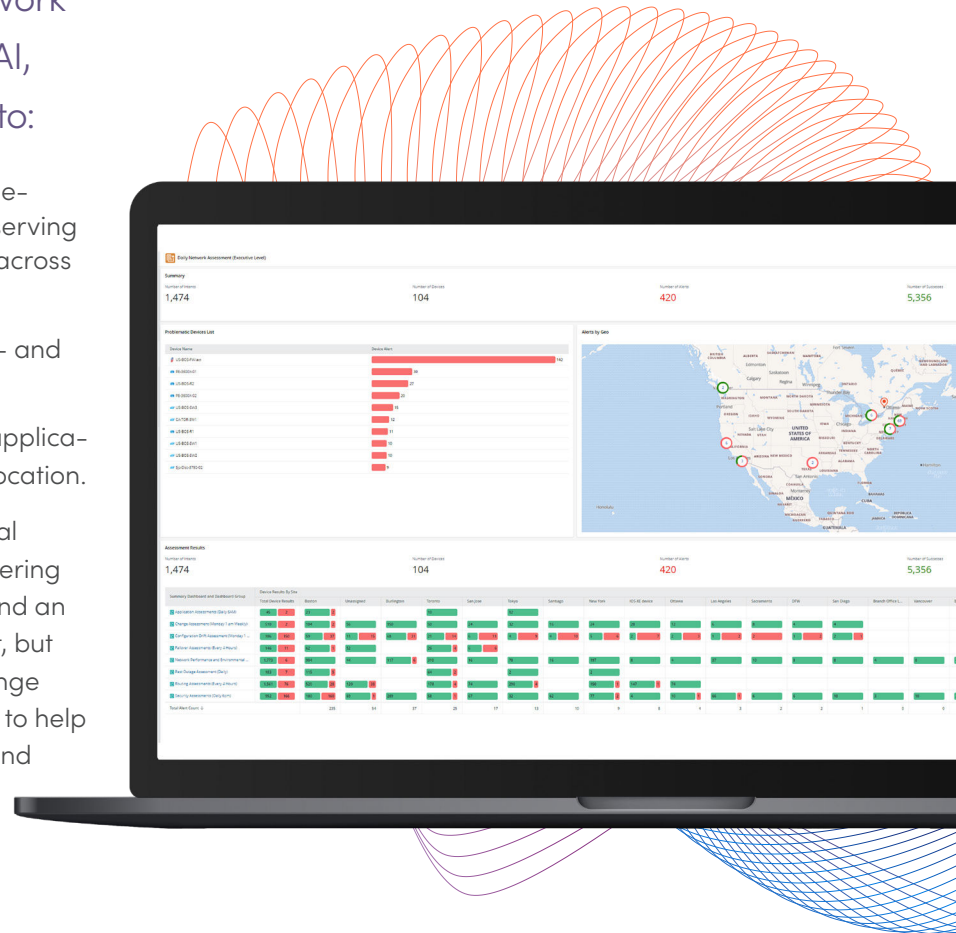


# Platform Modules Datasheet

NetBrain Next-Gen is a no-code network automation platform that leverages AI, automation, and human knowledge to:

- 1. Prevent network outages:** By automating troubleshooting diagnosis, reducing downtime and observing the configuration drift and the operation status across the network.
- 2. Defend network changes:** By incorporating pre- and post-change validation.
- 3. Provide application assurance:** By monitoring application path change and performance in a single location.

This comprehensive platform is built on a true digital twin of the network, a revolutionary Golden Engineering Studio to reverse engineer your network designs, and an AI Co-Pilot bot for simplified network management, but also Preventive Network Automation, Network Change Management, and Application Assurance modules to help organizations proactively address network issues and ensure optimal performance at scale.



## Preventive Automation

NetBrain's Preventive Automation module delivers unlimited automation usage for troubleshooting, change, observability and auto-remediation to enhance reliability and performance. By proactively identifying and resolving potential issues before they impact the network, this module helps reduce downtime and improve overall efficiency. Key features include:

- **AI Chatbot:** Run unlimited intents while leveraging an LLM model to take user input and backend automation tools to produce output for end users.
- **Scheduled Automation:** Execute user-developed network automation fully unattended and scaled networkwide at user defined schedules.
- **Machine to Machine Triggered Automation Troubleshooting:** Integrate with 3rd party ticket and monitoring tools to quickly detect anomalies and troubleshoot network issues with AI.
- **Network Observability:** Offering no-code interactive live dashboards for assessing network design, fault tolerance, performance, compliance and risk, and application health.

# Change Management

NetBrain's Change Management module provides Triple Defense Change protection throughout the network change management workflow, ensuring that modifications are implemented in accordance with network design and without disruption. This module offers:

- **Change Automation:** Automates change requests and approvals to eliminate human error.
- **Pre-Change Validation:** Before change, automate testing of existing rules on change devices for application connectivity, performance & security requirements.
- **Post-Change Validation:** After change, add automation library of your design standards, past changes, critical assets, test plans to protect future changes.
- **Auto-Remediation:** In instances of non-compliance with golden designs, change commands are generated and approval is requested automatically to prevent service-related problems and risk.
- **Impact Analysis:** Assess the potential impact of changes before implementation.
- **Compliance Tracking:** Ensure that all changes adhere to regulatory and organizational standards.
- **Rollback:** In cases of conflict, easily rollback changes to prevent adverse effects on the network and its applications.
- **Reporting:** Ensure design compliance of the entire production network and get a complete log history of changes and export configuration and rollbacks as CSV reports.
- **ITSM Change Approval:** Integrate NetBrain Change Management into your existing ITSM approval process for transparent execution.

# Application Assurance

The Application Assurance module (AAM) provides visibility and control over application performance across the hybrid-cloud network. This solution helps organizations ensure that their applications run optimally, delivering a better user experience. Key features include:

- **Golden Path:** Save and view intended "Golden Paths" including their behaviors to compare against live application paths.
- **Application Manager Dashboard:** Visualize live, historical, and current baseline application paths against the Golden to discover deviations. View all application path statuses including diagnostics, performance, and history.
- **Performance Monitoring:** Continuous tracking of application performance metrics.
- **Auto-Triggered Path Diagnosis:** Automatically trigger NetBrain to auto-diagnose application path issues from integrations with ITSM tools like ServiceNow.
- **Path History:** Get a history of all automated checks over time for all paths in a single location. View historical path changes to query and review anomalies.
- **Exportable Reports:** Obtain a full report on each path and an Excel file for independent processing and archiving.

## Summary

NetBrain Technologies offers a comprehensive network automation platform designed to enhance network resiliency, defend change management, minimize risk, and ensure application performance. By leveraging automation and real-time analytics, organizations can maintain optimal network operations and improve service delivery performance.